

Archeologist's notes: On this clay tablet, scribes from the Temple of Bau recorded the amount of barley (a grain) that each of the workers and their families will receive.



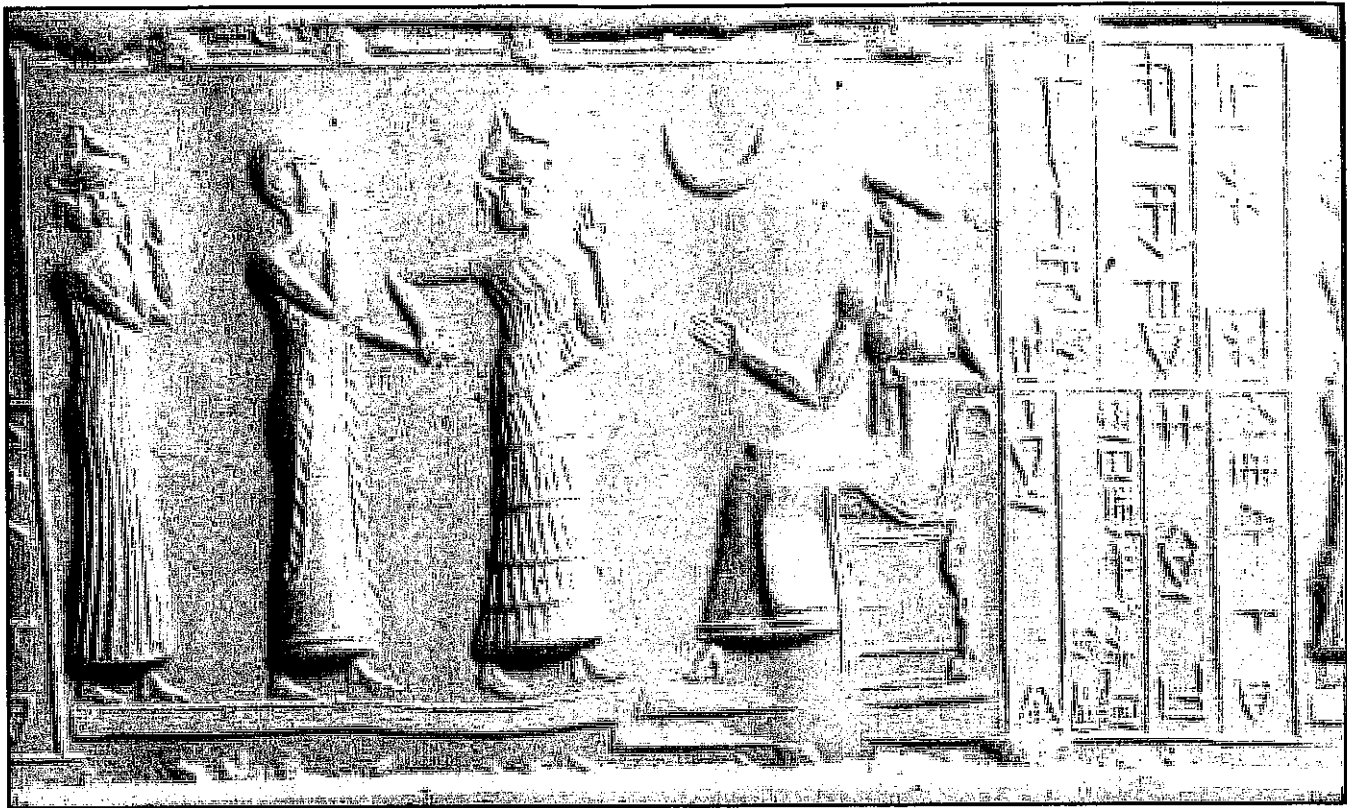


Archeologist's notes: This small statue of a married couple was found in the rubble of a religious shrine. The original statue had eyes made of shells and semiprecious stones. It was probably left at the shrine as a gift to the gods.

2



Archeologist's notes: This impression was made from a stone seal. It shows two gods. One god has a hand in the shape of a scorpion. The other is using a plow.

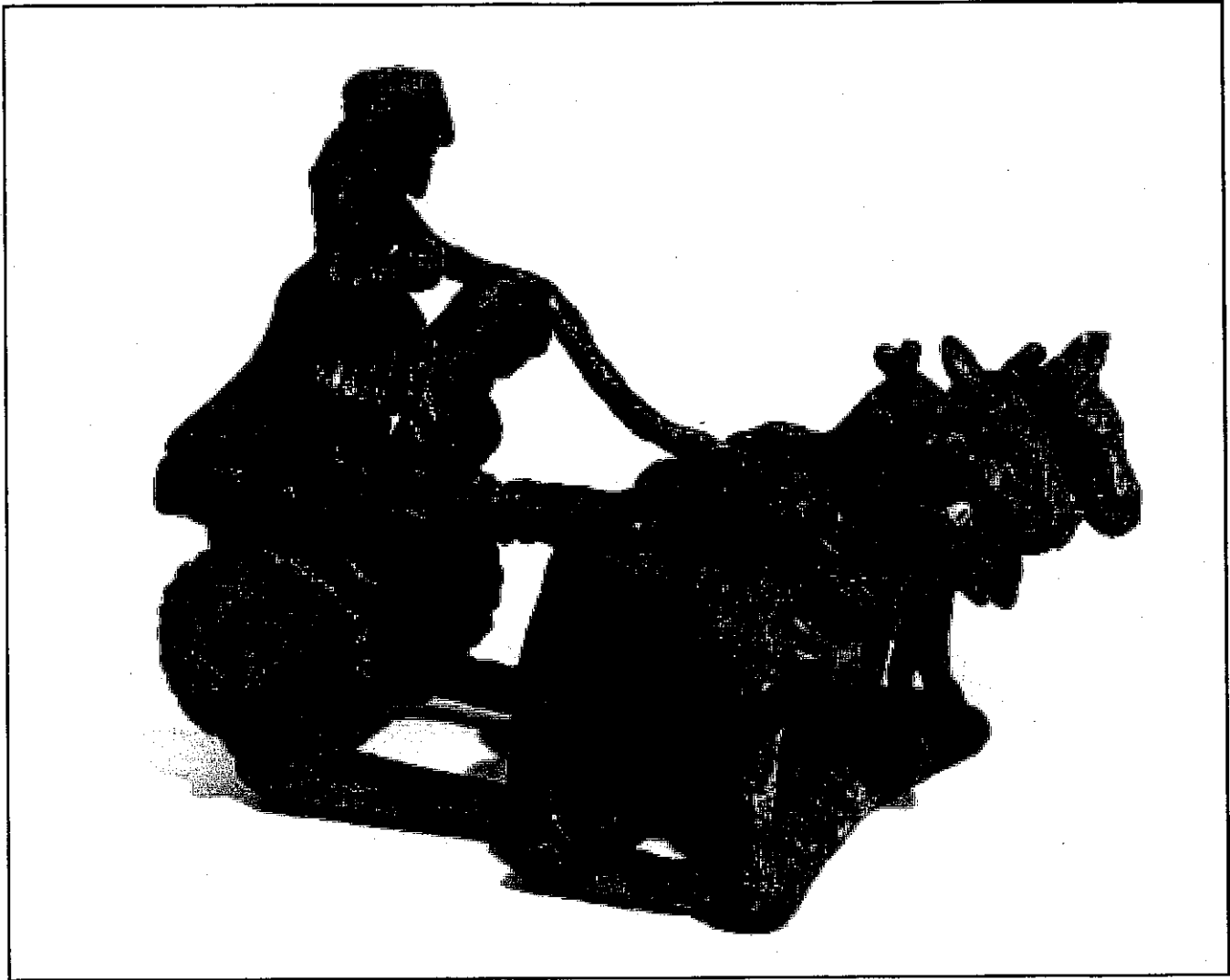


Archeologist's notes: This clay seal shows King Ur-Nammu (seated) appointing Hashhamer as one of his governors. The cuneiform inscription on the seal says, "Ur-Nammu, the mighty hero, king of Ur; Hashhamer, the governor of Ishkun-Sin, his servant."

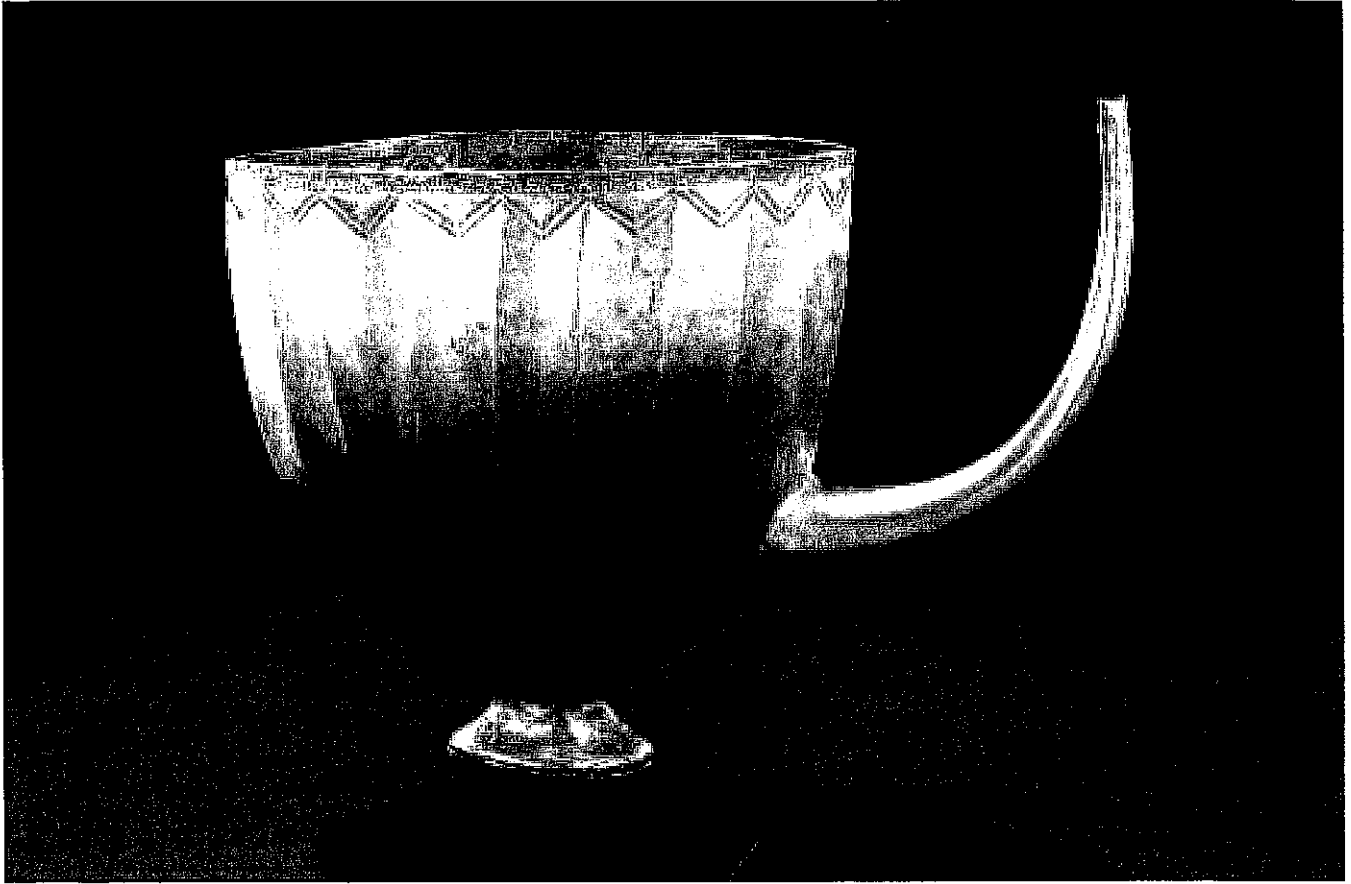


This carved stone seal was rolled across a slab of clay to create the scene shown above.

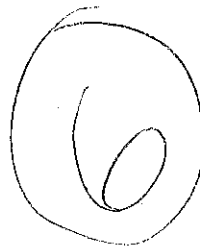
4

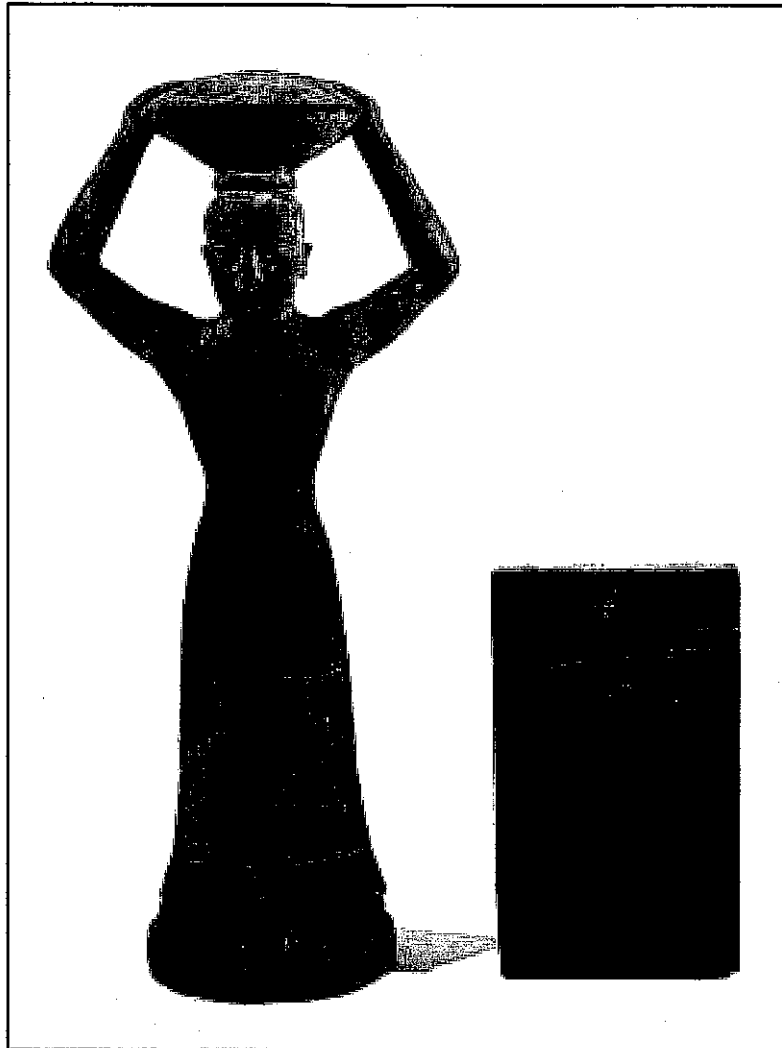


Archeologist's notes: This small copper statue shows a Sumerian chariot being pulled by four donkeys. This kind of chariot was probably used by Sumerian soldiers.

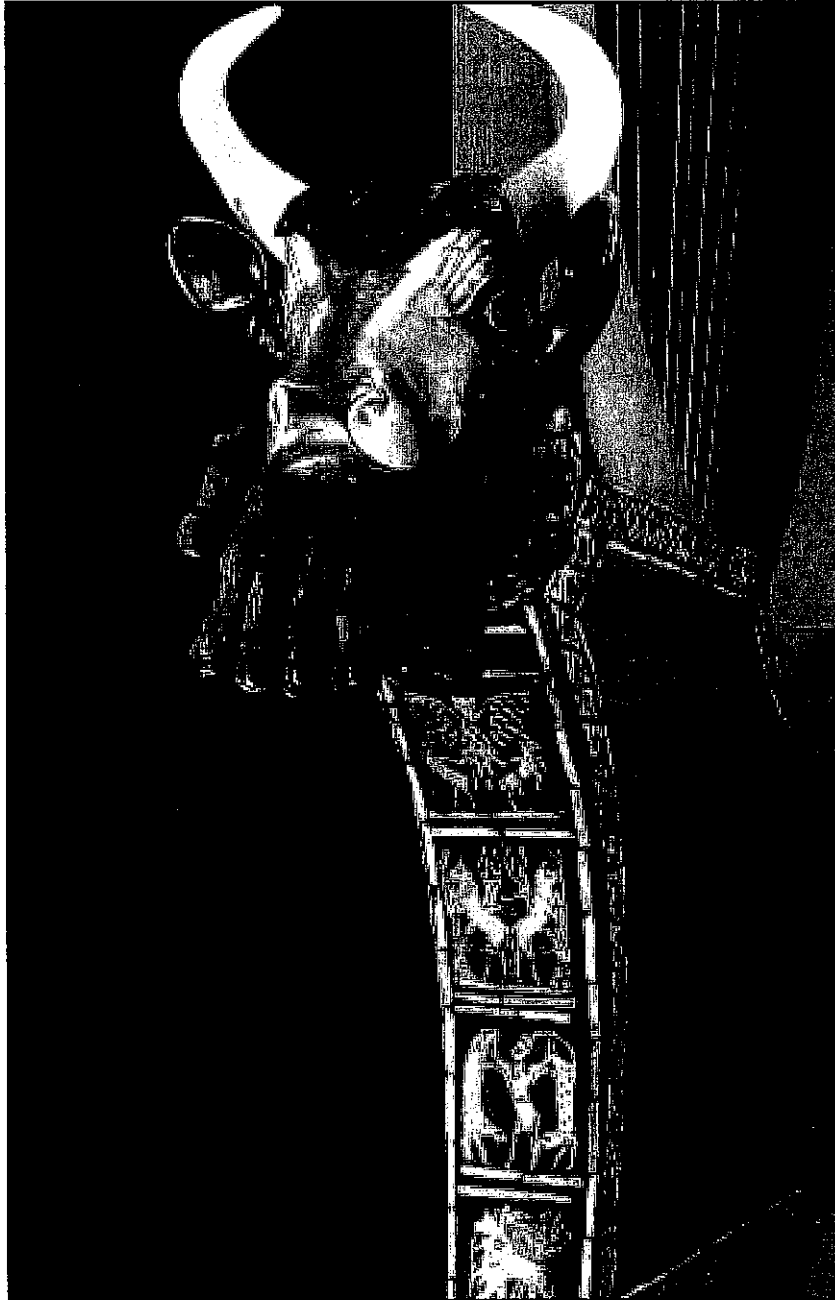


Archeologist's notes: This gold cup was created by Sumerian artisans, probably to be used at banquets. These banquets were generally for the members of the upper classes of Sumerian society.





Archeologist's notes: This bronze statue shows King Ur-Nammu carrying a basket of bricks on his head. This probably represents the fact that one of the king's main responsibilities was to build and maintain the temples, even though he didn't actually do the work himself. The inscription around the body of the statue records the restoration of the temple of Inana, the patron god of Uruk.



Archeologist's notes: This lyre—a stringed musical instrument—was decorated with gold and semiprecious stones. It was found in the tomb of a Sumerian queen. Royal musicians may have played this instrument to entertain the queen and her court. The music you hear is similar to the kind of music the queen might have listened to.

